

TERM 1 NEWSLETTER 2020

Dear Grade 2 parents,

Welcome to Term 1. The year has started off well with lots of excitement and enthusiasm. The first week has been spent building relationships and it has been very exciting for both teachers and children to get to know their new classmates. We welcome all of you into the Year Two area and look forward to getting to know you all this term

Dates to remember:

11th & 12th February- Getting to Know You Meetings

26th February - Ash Wednesday

9th March- Labor Day holiday

23rd March- School Photos

25th March-- End of Term 2:30

Reminders:

This term the children need to have sunscreen applied before coming to school. We will remind them to reapply their sunscreen at lunchtime.

Students will also need to wear their hats during recess and lunch.

Please ensure **all** clothing items and containers are labelled to ensure no items are lost. Thank you for your cooperation.

Literacy

The children will be building on their reading, comprehension and writing skills. We will be following the **CAFE Reading** (Comprehension, Accuracy, Fluency, Expand Vocabulary) and **Daily 5** process. This involves building reading stamina, choosing 'good fit' books and working on writing and spelling using the SMART Spelling process.

This term the writing genre we will be focusing on is Recount using time connectives and past tense. Common nouns, proper nouns and noun groups will be our grammar focus.

Contact Information

aharkin@spbentleigh.catholic.edu.au

olic.education.au

nbirthisel@spbentleigh.catholic.edu.au

holic.education.au

Wellbeing

This term Grade 2 will continue to participate in the whole school friendship program 'Friendology'. The program helps the children to develop skills in forming new friendships as well as recognising what is normal in a friendship. .

Numeracy

This term we will be covering place value, revising numbers to 100 and up to 1000. We will be looking at the different strategies used for addition using hands on materials. We will be collecting, recording and interpreting Data Representation in a variety of graphs. Later in the term we will look at 2D shapes and transformations as well as recognising and using small quantities of money. Problem solving is a key aspect of mathematics and is incorporated into all aspects of the mathematics curriculum.

Religion:

During Term One, children will create a prayer mat for the classroom which will be the centerpiece for morning meditation and prayer.

Religion will be taught using an Inquiry approach so that lessons become more meaningful and children will engage in a variety of forms of Prayer to further develop a connection with their faith

In the lead up to Easter, children will participate in an Ash Wednesday Prayer Service and prepare themselves for Easter by identifying ways in which they can better themselves during the period of Lent.

Inquiry

This terms Inquiry unit will focus on Belonging and Relationships with others. The children will develop an understanding of what belonging looks and feels like as well as what a relationship is and why positive relationships are important in their lives.

They will also be learning about how to feel safe in different environments and show respect and fairness towards others.

The children will learn to recognise and identify emotions of themselves and others, as well as developing strategies to assist them when dealing with conflict.

Visual Art

Level 2 students will continue to explore art experiences with a focus on shape, line and colours. Students will explore and express their own ideas and continue developing art skills and techniques in drawing and painting and paper collage. Students will develop visual art practices, language and emotional literacy with a focus on 'Summer Holidays', favourite things and 'All about me'.

Connie Antenucci

Japanese

Welcome back to another exciting school year in 2020! This term in Japanese, the duration of lessons is 40 minutes per week. Our focus is participating in classroom routines like opening and closing lessons, saying thank you and following instructions.

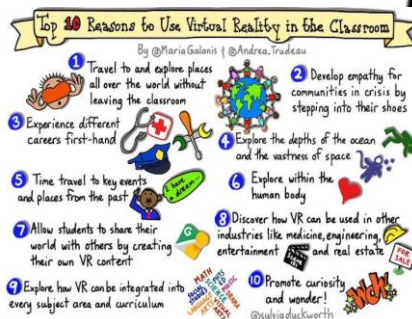
Performing Arts

This term the children will be introduced to the magic and fun of drama. Each week they will have an opportunity to explore character, role, mime and creative movement in a range of activities. They will learn improvisation techniques and develop performance skills as they present work to peers during each session. The children will be learning ways to express their ideas in a fun and collaborative space.

Sport

During Term 1 Phys Ed the children in Grade 2 will focus on the areas of Movement, Ball Handling and Games. Skills that will be further developed will include throwing, catching, bouncing, running, jumping, skipping and hopping. The children will also participate in games that focus on dodging, passing and shooting and will continue to develop their skills of communication, cooperation, body awareness and teamwork.

Thanks to the P&F, last year I was able to purchase a Virtual Reality kit. It has finally arrived and we are all very excited about its prospect. This term all students will be immersed in new learning using the Virtual Reality headsets and an app called Google Expeditions. Imagine a class full of children taking an immersive, guided tour through some of the cultural gems and natural marvels of our world (and even some off planet!). The idea that we could access 360, immersive imagery was like science fiction a few years ago, until Google combined the power of VR headsets with gigapixel quality imagery and the Expeditions software which provides detailed background notes in each scene. The possibilities are endless and now we are able to take the whole class on a virtual field trip. Where possible, all VR experiences will be linked to classroom learning, however I think learning will take place regardless due to the experiences the students will have.



ICT

Homework

Homework will begin in Week 4, when take home readers will be sent home with your child. Maths and Literacy Homework will be sent home in Week 5, which will be a small activity related to the work being covered in class.

As Reading is the most important component of the homework please listen to your child read each day. Reading to your child is also very beneficial, as it is a way to show the children strategies that you use when reading aloud. Reading to is to be recorded each night in their diary and signed by a parent/guardian. All homework is handed in on a Friday.

Specialist Timetable

2H

Monday: Japanese
Tuesday: Sport
Wednesday: ICT,
Performing Arts
Thursday: Library
Friday: PE, Art

Specialist Timetable

2B

Monday: Japanese
Tuesday: Sport
Wednesday: ICT,
Performing Arts , Library
Friday: PE, Art

